



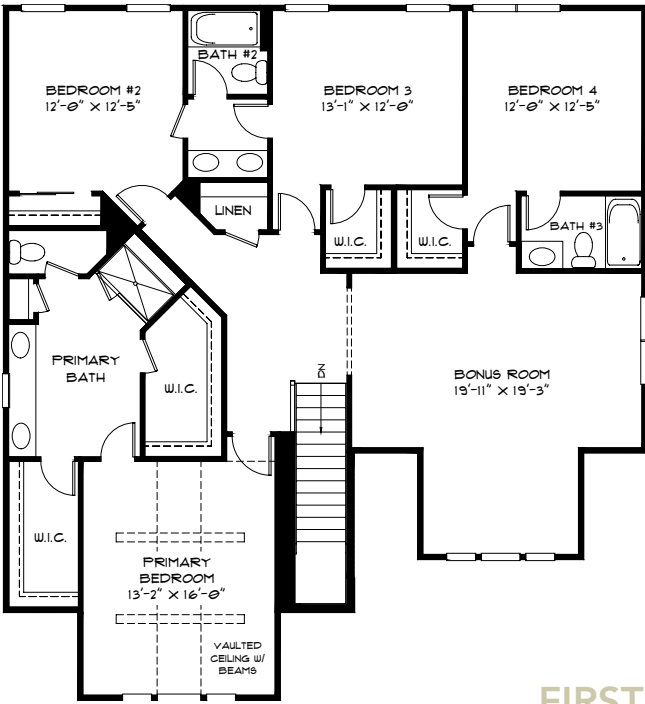
529 E Dominion Road
Columbus, OH 43214

4,612 square feet of
finished living space

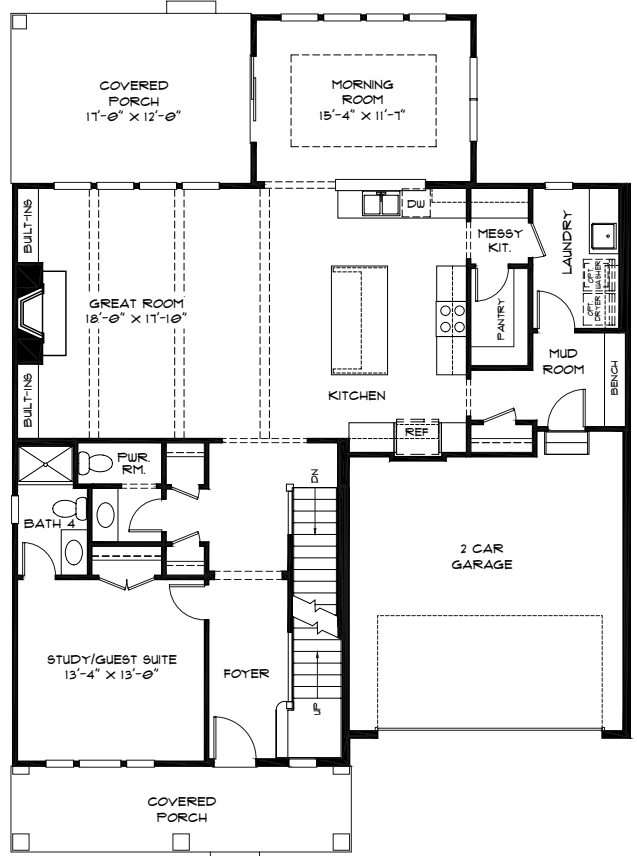
6 Bedrooms
5.5 Baths
2 Car Garage

OUTSTANDING FEATURES

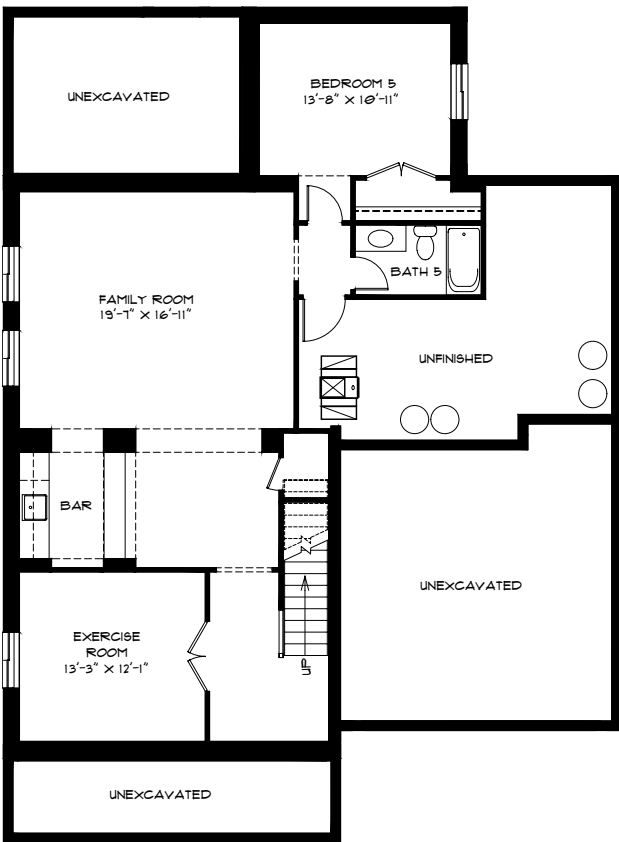
- 3,359 square feet on the 1st & 2nd floors, +1,253 square feet of Finished Lower Level
- Finished Lower Level, featuring 9' tall, poured foundation walls, egress windows, a Bedroom, a Full Bath, Exercise Room, plus a spacious Family Room with wet bar
- Dramatic Kitchen with custom Amish-built cabinetry, quartz countertops, Bosch appliances, and a Messy Kitchen space with a walk-in Pantry
- 1st Floor Laundry
- 2nd Floor Bonus Room
- Hardwood Floors
- Gas fireplace with custom built-ins
- Too many elevated features to list!



SECOND FLOOR



FIRST FLOOR



LOWER LEVEL

the MORE
THOUGHT
per square
foot home

compass
HOMES

CompassHomes.com
EQUAL HOUSING OPPORTUNITY

Although this brochure is believed to be correct at the time of publication, we reserve the right to make changes without notice or obligation. Room sizes and features (windows, doors, etc.) may vary depending on the options and elevations selected. This brochure is for illustrative purposes only and is not part of a legal contract. It is recommended that the architectural blueprints be reviewed for further clarification of features. The elevations and floor plans may be shown with some optional items (porch railings, metal roofs, side load garages, stone, brick, etc.). Optional items are available at additional cost, and not all features are shown. Please contact Compass Homes for further information.

PROPRIETARY RIGHTS NOTICE: Any drawings, renderings, images or attachments are the property of Compass Homes, Inc. and contain proprietary information. Use, disclosure or reproduction of these drawings, renderings, images or attachments or its contents, in whole or in part without the express, written permission of Compass Homes, Inc. is strictly prohibited. © 2025 Compass Homes, Inc. ALL RIGHTS RESERVED.